

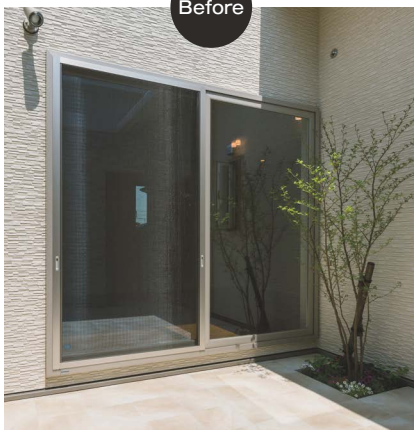
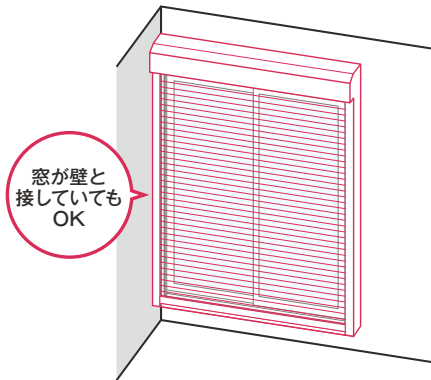
窓にシャッターを取付

2hour  
Reform

# 特殊な納まりにも対応できます。

窓の横に余裕がなくてもOK

片入隅

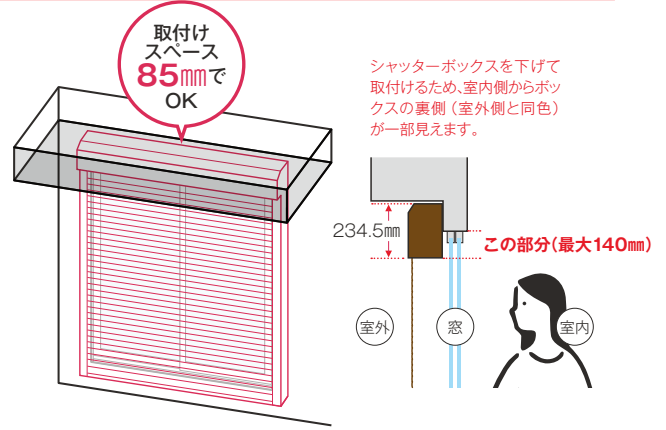


After

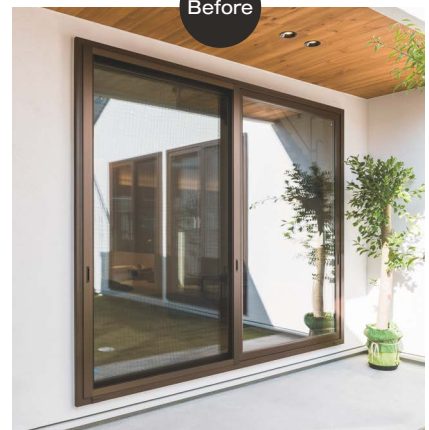


窓の上に余裕がなくてもOK

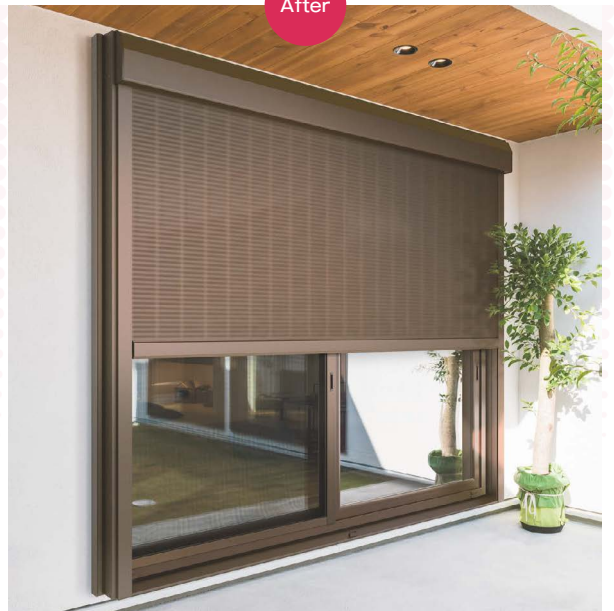
ボックス下げ



※上記寸法以外に作業スペースが必要です。

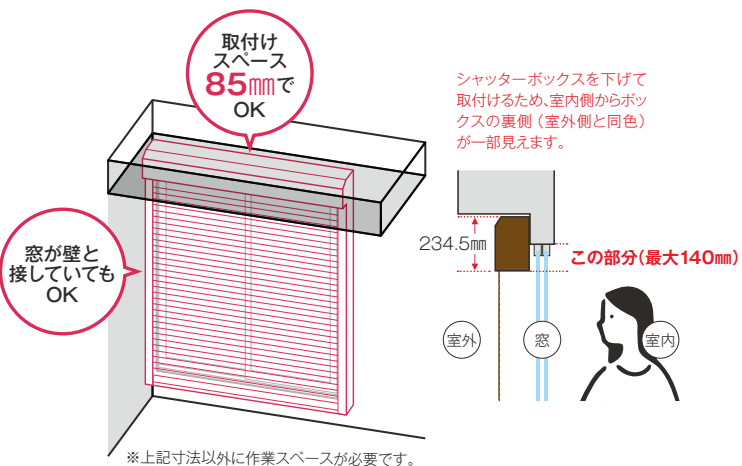


After

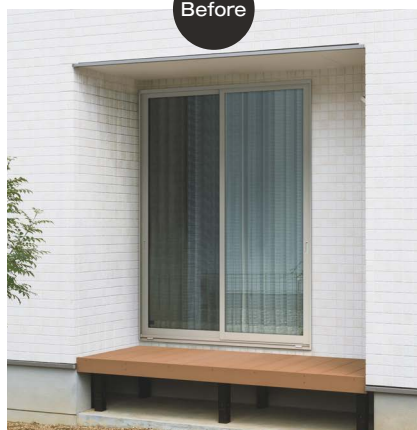


## 窓の横・上に余裕がなくてもOK

### ボックス下げ片入隅



Before

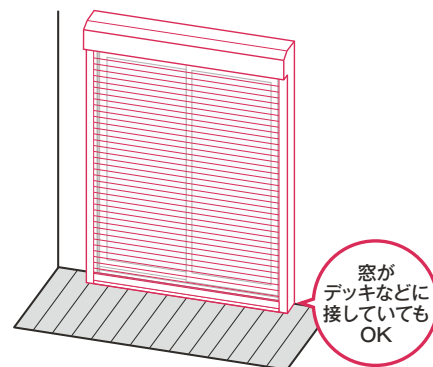


After

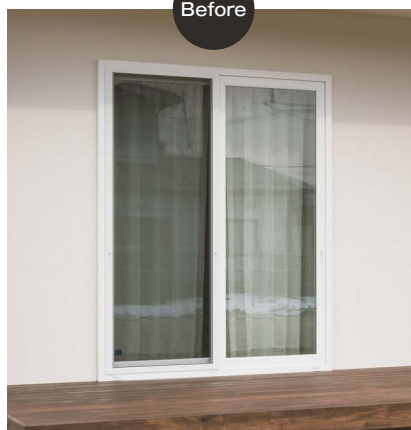


## 窓の下が土間やデッキに接していてもOK

### 土間用



Before



After

